



PORTFOLIO

EXPERIMENTAL APPROACH

SHASHI PRABHU & ASSOCIATES' ADMIRABLE APPROACH AND DEDICATION HAS RESULTED IN A SERIES OF STRIKING STRUCTURES.

Text: Swati Balgi
Photographs: Courtesy Shashi Prabhu & Associates



ANOL PRABHU

CONTACT DETAILS
SHASHI PRABHU & ASSOCIATES
Wankhede Stadium,
Above Kanga Library,
Churchgate,
Mumbai 400033
022-66199999
www.spa08c.com

AUGUST 2018 SOCIETY INTERIORS 77

In this gizmo-obsessed age and time, simplicity is a rare commodity that never fails to impress. For humble and modest Mumbai-based Architect **Shashi Prabhu**, simplicity is the mantra in all his designs. For him, making simple things complicated is difficult! For more than five decades, Shashi Prabhu has been doing outstanding work, and has created his own space in the field of architecture and interior design.

After graduation, his dynamic and talented son Amol Prabhu proceeded for his Masters to Cornell University, New York. Amol worked with Bovis Lend Lease as their Project Manager in their NY office. During his next 7 years at Bovis, he had the opportunity to work on numerous prestigious projects such as \$550 million Millennium Place - a mixed use 40 storey twin tower building in downtown Boston with a 10-theatre multiplex, a 45,000 sq. ft. fitness center, the luxury Ritz Carlton Hotel, and the \$300 million Roswell Park Cancer Institute and Research Center in Buffalo NY – one of America's leading and largest cancer research hospitals accommodating over 500 beds and a \$100 million photonic manufacturing facility for Corning in NY.

Amol joined his father in 2015 and has been instrumental in driving the firm into the next generation of architectural and interior design practice. His international expertise has ensured that the firm delivers the highest standards set by the firm over the last five decades. He directs SPA's future strategies — be it projects, expansion or creativity within desired budgets for its varied multi-national clients spread across the country and overseas.

Over the years, the firm has grown to merge eastern and western influences, yet maintains a perfect balance.

Here we compile a few projects that showcase the versatility of the firm...

Willingdon Sports Club

Willingdon Sports Club is surrounded by over 4,000 varieties of trees, plants and shrubs and tucked between the finest Golf courses. This members-only club house was founded over 100 years ago. Over the years, the sports infrastructure had severely deteriorated due to its age, and the members wanted to build a new badminton complex. SPA was hired to evaluate the possibility of constructing a state-of-the-art badminton complex with all amenities, conducive not only to meet the sports needs of the members, but also to host an international badminton competition.



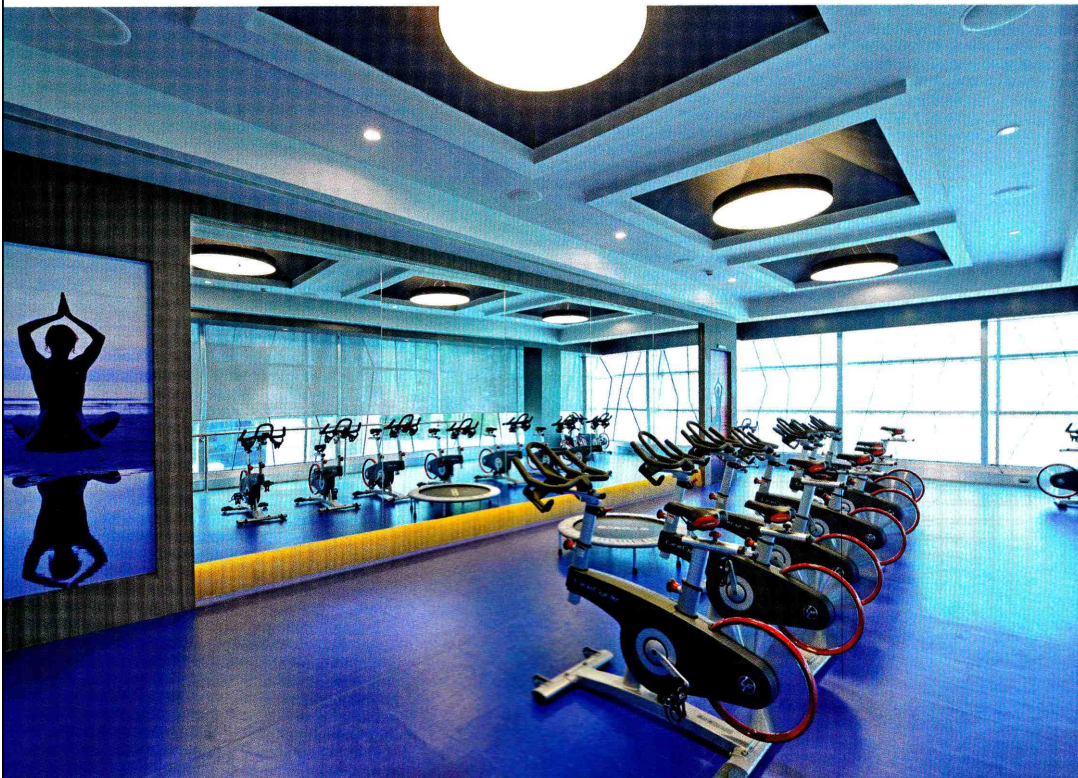
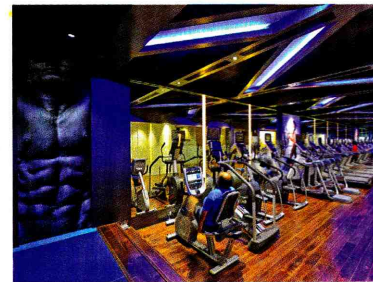
SVP Stadium for NSCI

It is difficult to miss the Sardar Vallabhai Patel Indoor Stadium as one passes Haji Ali in Mumbai. This imposing glass and aluminum clad structure has been a host to numerous events such as international sports competitions, exhibitions, standup comedy shows, rock concerts, automobile launches and multicultural events.

However, this stadium was not always such a modern structure. The original stadium was constructed in 1950 and was just a large outdoor concrete pad with stepped concrete tiers surrounding it. In 2003, NSCI had a vision to expand the stadium to better suit modern times. A plan was conceived to demolish the original stadium and construct an ultra-modern, fully air-conditioned indoor stadium in its place.

Almost 14 acres of ground was excavated and an underground parking for almost 1,000 cars was constructed. A 90 mts diameter columnless circular arena with 18 mts clear height was constructed over this parking structure. "The success of any arena is the planning of the concourse space around it which houses the concession areas and the support facilities. (16) such large concourse zones were created around this arena, which could act not only as a buffer space, but also could be used for F&B and pre-function areas," explains the designer.

The stadium has a seating capacity of 3,500 people with luxurious reclining chairs with unrestricted view of the arena. Additional 5,500 people could be seated in the arena during stage events. 13 sound proof rooms are located underneath the tiers, which are used for floor management, sound control, VIP enclosures, green rooms and other support activities. The roof is constructed out of acoustically treated aluminum standing seam roof with 4 layers of sound insulating material. The exterior of the stadium is clad in double glazed low 'e', toughened and laminated curtain-wall system to minimize the solar impact on the interior of the building.



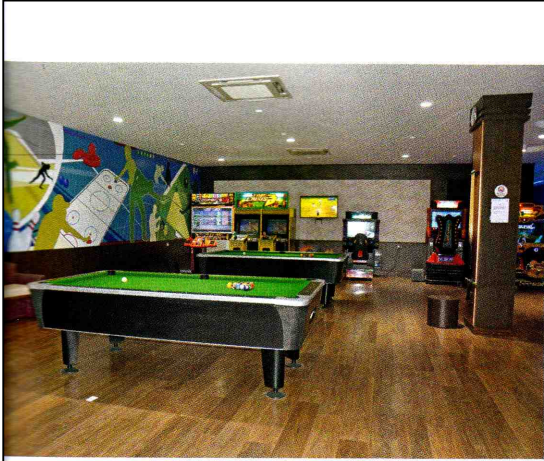
MCA Recreational Club at BKC

One of the most challenging and most appreciated projects designed by the talented team is the high end recreational/sports club in Bandra Kurla Complex. Spread over an area of 70,000 sq. ft., the designers have provided amenities such as half-Olympic swimming pool, gymnasium, health club, residential rooms, squash courts, badminton courts, restaurants, card room, billiards, theatre, library, tennis court and miscellaneous amenities.

This first-of-its-kind (in India) Indoor Cricket Academy was designed and constructed for the Mumbai Cricket Association at the Bandra-Kurla Complex in Mumbai, which will redefine cricket training in the country.

It is characterised by the imposing neo-classical architecture, state-of-the-art equipment with temperature and humidity controlled indoor nets that can simulate weather conditions to any cricketing venue in the world. Seven retractable nets with video camera recording facilities on both ends can analyze the game of both the bowler as well as the batsman and provides a live video feed to the coach anywhere in the world through a high-speed internet connection. The complex also has a dedicated gymnasium and health club.

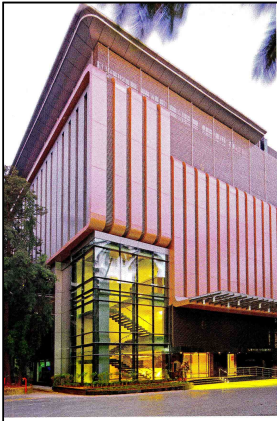




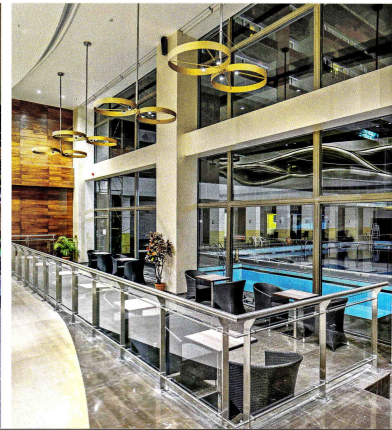
MCA Kandivali

MCA-Sachin Tendulkar Gymkhana is a prestigious recreation centre designed by the design team. The structure is reminiscent of a bygone area, and provides hospitality and warm service. After the plot was given to MCA to develop cricketing facilities, a club house was constructed. MCA Kandivali is a mixed-use hospitality building accommodating food and beverage outlets, banqueting facilities, health spa and gymnasium facilities, residential rooms, swimming pool, outdoor and indoor sporting facilities, all designed aesthetically under one roof.



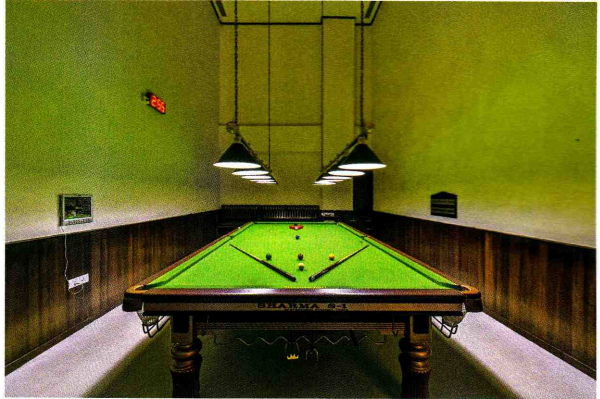


Garware Club House
Garware Club House is a "member's only" private club which has been in existence since 1974. The club house is located on a 12 acre prime property in South Mumbai, three quarters of which is occupied by the world-renowned Wankhede Stadium. In 2006, the club took up an initiative of demolishing the old club structure and constructing a modern club house in its place, measuring almost 200,000 sq.ft. After a detailed study, the design team skillfully took cues from the art deco surrounding, while designing the facade.
"We designed the facade with a twist - of modernism coupled with the bold and repetitive strokes of art deco language. The facade of the building is clad in blend of aluminium composite panels, glass and UPVC louvers which are intentionally designed to make the building look lighter and sleeker due to limited available foreground," explains Arnd. The bold concentric rings fabricated in ACP are aesthetically set within UPVC louvered background to lend a hint of the art deco style.



Airoli Sports Complex

The existing complex was small and inadequate. Few visionary citizens got together and convinced CIDCO to allocate them a plot to develop sporting facilities. They invited private partnerships to co-develop this complex. The new complex has badminton, squash, TT, gymnasium, restaurants, health club, swimming (roof top), and residential rooms, banquet halls, and a business centre. Breaking away from the monotony of the traditional boundaries of design, the team has experimented with forms and colours, yet maintained the right balance between aesthetics and functionality.

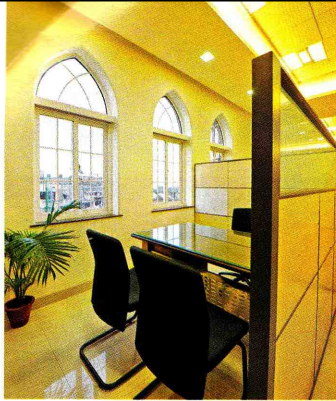


Bombay Gymkhana

Bombay Gymkhana came into existence in 1875 and is one of the premiere gymkhanas in the city of Mumbai.

Bombay Gymkhana Rugby Club (rugby union) are tenants. As this is a 100-year-old heritage structure, the architect and his team had to follow certain dictates set by the government. The team has skilfully restored the complex, and the areas within. A long building, which serves as the lobby, table tennis area, badminton court, restaurant and lounge connects the two roads. The region between the building and the lane is a large ground. The Gymkhana was constructed for the promotion of sports and there are training programs for all kinds. The purpose of restoration was to ensure longevity of the historic structure and to enhance its original design.

Amol Prabhu truly manages to fine tune the balance between traditional and modern architecture. With innovative approach to design, and his vast experience in the field of design, we sure can expect more innovative projects in the coming years. ■



MCGM Head Office: Municipal Head Office of Mumbai

Municipal Corporation of Greater Mumbai (MCGM) is all set to undergo a major revamp at their main headquarters at CST, Mumbai. "One of the key initiatives would be to consolidate the departments that are currently fragmented all over the building due to unplanned expansion, thereby substantially improving the working efficiency of the office," says Amol. These departments in this 250,000 sq.ft. office space will be meticulously deconstructed and then reorganized based on the operations and inter-dependencies of each department. All offices will be centrally air-conditioned and extensive storage facilities will be planned to accommodate for future expansion. Work is expected to complete in the next 24 months.



Wankhede Stadium

"Wankhede Stadium was conceived out of a bitter controversy between two Indian cricketing giants, which ended up in us getting an opportunity to design an international cricket stadium," informs Amol Prabhu. Designing Wankhede Stadium was a major challenge for the team, as they had to complete this mammoth project in less than 14 months. The client's brief was to design a stadium with a capacity to accommodate 40,000 people during both national and international matches. The multidisciplinary team did meticulously study and fine-tuned all requirements into their design.

In 2009, the team was once again approached by the Mumbai Cricket Association, but this time, to modernise the stadium to host the World Cup 2011. The project involved demolishing and reconstructing two existing stands of the stadium, removing the dilapidated roof and the columns supporting them, and then adding a cantilevered truss to support a roof that would offer obstruction free sight to all spectators. Care was taken to ensure player safety and spectator comfort. The challenge was to provide proper vision of the entire field for every spectator sitting in the stadium.



Within a short period of time, the squash and the gymnasium committee decided to add six squash courts, a 7,000 sq. ft. multi-sports hall and a 7,000 sq. ft. gymnasium and health club to the complex. Due to its overwhelming popularity, the club also took a decision to add a two-level underground car parking under the sports complex for parking 100 cars, bringing the total constructed area of this grand club house to almost 60,000 sq. ft., which was skillfully handled by the design team.

